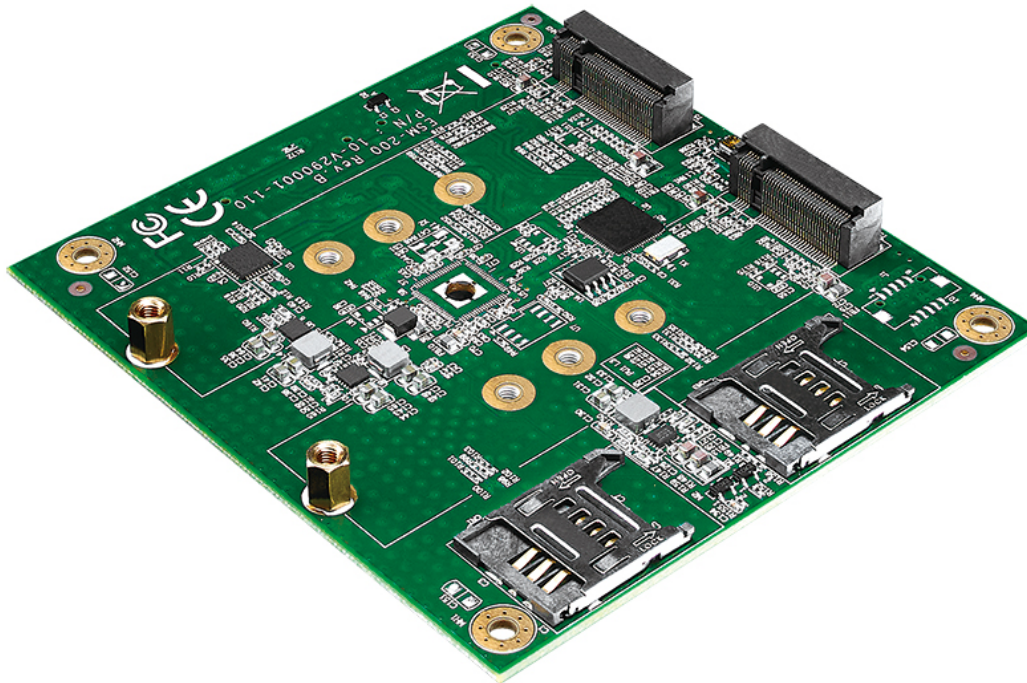


ESM-200/201 SUMIT EXPANSION CARD

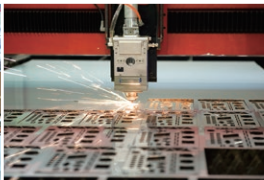
SUMIT Expansion Card with dual M.2 Key B Slot and dual SIM Socket, 5G/4G/LTE/GPRS/UMTS, 0°C to 70°C



- Rugged SUMIT A, B Interface, SUMIT Specifications version 1.5 compliant
- Dual M.2 Key B Socket supports variety of M.2 form factors
2230/2242/2280/3030/3042/3052 for storage and/or expansion
- Onboard dual SIM Socket
- Supports multiple 5G/4G/LTE/GPRS/UMTS wireless communication
- 0°C to 70°C Operating Temperature
- PCI Express compliant



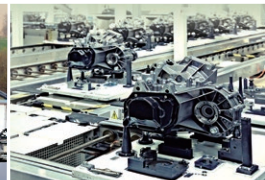
Intelligent Surveillance



Machine Vision



ITS (Intelligent Transportation System)



Industrial Automation

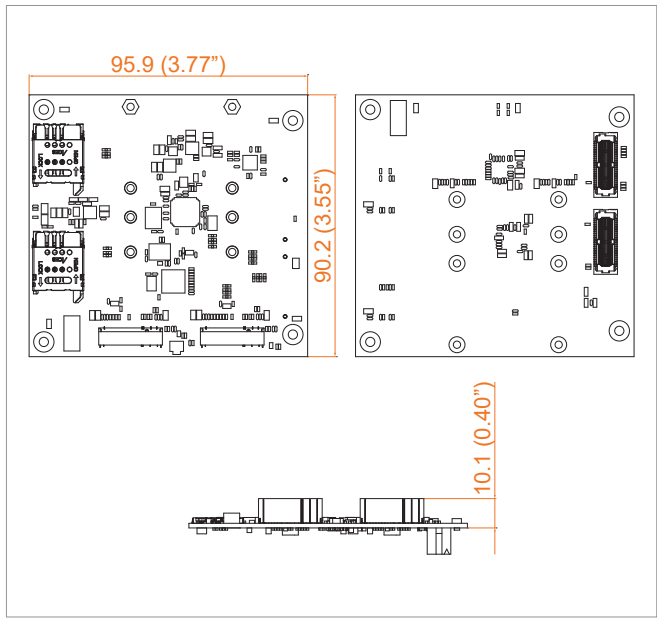


Logistic

Specifications

I/O Interface	
Bus Type	SUMIT A, B
SIM Card	2 Sim Card Socket
M.2	2 M.2 Key B Socket supports M.2 form factor : 2230/2242/2280/3030/3042/3052
Mechanical	
Dimension (W x D x H)	90.2mm x 95.9mm (3.55" x 3.77")
Weight	145g
Environment	
Operating Temperature	0°C to 70°C (-40°F to 158°F)
Storage Temperature	-40°C to 85°C (-40°F to 185°F)
Humidity	5% to 95% Humidity, non-condensing
Relative Humidity	95% @70°C
EMC	CE, FCC Class A

Dimensions & Drawing



Order Information

ESM-200	• SUMIT Card with 2 M.2 Key B socket, PCIe x1 & USB 3.0 interface for 5G applications
ESM-201	• SUMIT Card with 2 M.2 Key B socket, PCIe x2 interface